

Mission Critical Experts

Critical Power Resource solves problems related to...

- ✓ **Power Quality...** making sure the power to your equipment is reliable and clean preventing equipment damage.
- ✓ **Power Distribution...** getting clean, reliable power to the equipment that needs it.
- ✓ **Power Monitoring...** real-time monitoring of all power usage to measure consumption, determine PUE and identify places to save on energy.
- ✓ **Facility Documentation...** capture and protect your facility institutional knowledge and be able to access any time and any where it's needed.

Some of our clients include...



We Integrate and Supply...

- ✓ Uninterruptable Power Supply Systems
- ✓ Battery Sets and DC Systems
- ✓ Generator Sets, Paralleling Switch gear and Controls
- ✓ Peak Shaving and Co-Generation Systems
- ✓ Computer Racks, Cabinets, Flooring, and Accessories
- ✓ Precision Cooling and Humidification
- ✓ Power Distribution Units
- ✓ Remote Distribution Panels
- ✓ Dual Source Static Transfer Switches
- ✓ Automatic Transfer Switches
- ✓ Low and Medium Voltage Custom Switch gear
- ✓ Harmonic Mitigating and High Efficiency Transformers
- ✓ Voltage Regulation & Power Factor Correction
- ✓ Site Monitoring and Annunciation
- ✓ Facility Documentation Services
- ✓ Data Center Design and Commissioning

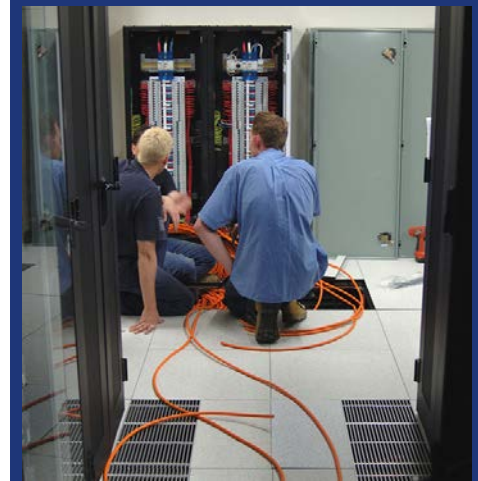
Site Services provided for all the above....



8480 Honeycutt Road
Suite 200
Raleigh, NC 27615
Phone: 919.844.6447
Fax: 919.844.9845

Email: customer.support@cpr-nc.com
www.cpr-nc.com

SERVICES



Critical Power Solutions
for the Mission Critical
Facilities Environment

SERVICES

REPAIR/SERVICE and PREVENTIVE MAINTENANCE

- ✓ Uninterruptable Power Systems
- ✓ VRLA Batteries
- ✓ Wet Cells
- ✓ Automatic Transfer Switches - Generator Sets
- ✓ Precision Computer Room A/C
- ✓ Low Voltage Switchgear (480VAC)

SYSTEM ENERGY EFFICIENCY STUDY

- ✓ Investigate and analyze your data center power, cooling and space utilization.
- ✓ Develop a solution that reduces power, cooling, and data center space requirements.
- ✓ Consider capacities or constraints of your facilities.
- ✓ Outline strategy to help achieve goals.

COOLING SYSTEM LUBRICANT UPGRADE

This will restore the condenser system to “like-new” condition and increase the cooling efficiency by 10 to 20%. Immediate ROI.

CARBON FOOTPRINT ANALYSIS

Calculate your carbon footprint and determine the carbon credits you may soon be able to buy or sell to meet government targets.

ENERGY MONITORING, ALARM ANNUNCIATION and REPORTING

We will monitor all energy usage within your data center, alarm any points that get out of range and provide usage reports that will help identify areas for energy savings. Typical first year energy savings is around 20%.

THERMAL GRAPHIC IMAGING

- ✓ Optimize existing and/or future IT equipment layout.
- ✓ All images will be gathered with a radiometric sensitivity no less than 0.2oC and a resolution no less than 20x120 pixel quality.
- ✓ Digital imaging (Visible) of all equipment being thermally imaged at a resolution no less than 1.7 Mega pixels.
- ✓ All anomalies rated above intermediate will be digitally imaged at a resolution of 7 Mega pixels.

ARC FLASH STUDY

Provide analysis in accord with NFPA70 and provide labels for equipment.

FACILITY DOCUMENTATION and VERIFICATION

Update all facility infrastructure drawings to current “As Is” status and place resulting drawings into a web-accessible system.

DATA CENTER COMMISSIONING

Commissioning of all Power Conditioning, Power Distribution, and Cooling systems within the data center.

360" PHOTO DOCUMENTATION

Result is a picture of all walls, ceiling and floor within a room. Can be done in layers as the room is being constructed so that you can see what’s under the wall at any location after construction is finished.

CAS AUDIT

After the Condition Assessment is performed, a plan is put in place to correct or replace the deficiencies found. Upon request, an additional follow-up audit can be performed to verify corrective actions were performed according to plan.

All services are performed by highly trained and experienced technicians. We stand behind our service with a 100% Satisfaction Guarantee.

For more information, please contact

CPR Client Services at:

Email: customer.support@cpr-nc.com

Phone: (919) 844-6447, option 3